

OPERATION GUIDE

1. Normal Operation

Drive the desk to the desired height using the "↑" or "↓" button.

2. Setting the Memory

Press the "M" button till the displayer flashing and then press "1" button.

Position 1 is now stored.

Repeat above procedure for positions 2,3,4.

Then hold and press to operate the "1", "2", "3", "4" button and the desktop will stop at the desired.

3. System Initialization

If the system doesn't work when we use, we may need to reset and initialize the system. Reset procedure is as follows: press the "↑" and "↓" button together for about 15s then you can hear a beep, do not release the button and keep pressing the "↑" and "↓" button, lifting columns will go down to its lowest position, you will hear a beep, then a new initialization sequence can be run.

4. Notice

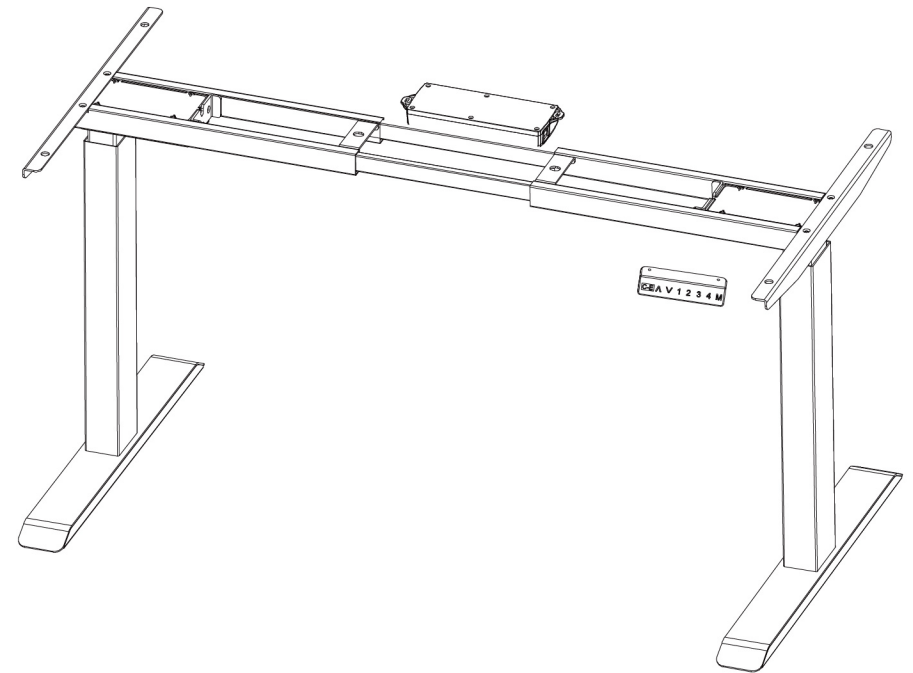
- ◎ This product must meet the technical parameters in use.
- ◎ Away from water and corrosion resistant gas.
- ◎ Please contact us or our distributors if there is something wrong with the product.



As above shown, add new switch function base on the premise that original keys function unchangeable, procedure as follows:

1. Press the "1" "2" "M" buttons together for about 5 seconds, display "C-E" (flashing)---then continue to procedure 2,3.
2. Press button "1" within 5 seconds, display "C" , then switch to metric system CM---go into the general operation.
3. Press button "2" within 5seconds, display "E" then switch to British system Inch----go into the general operation.
4. If above procedures no further operate over 5seconds, then will recover to the previous setting.

ASSEMBLY INSTRUCTIONS



This model does not including top, customers need to buy top by themselves

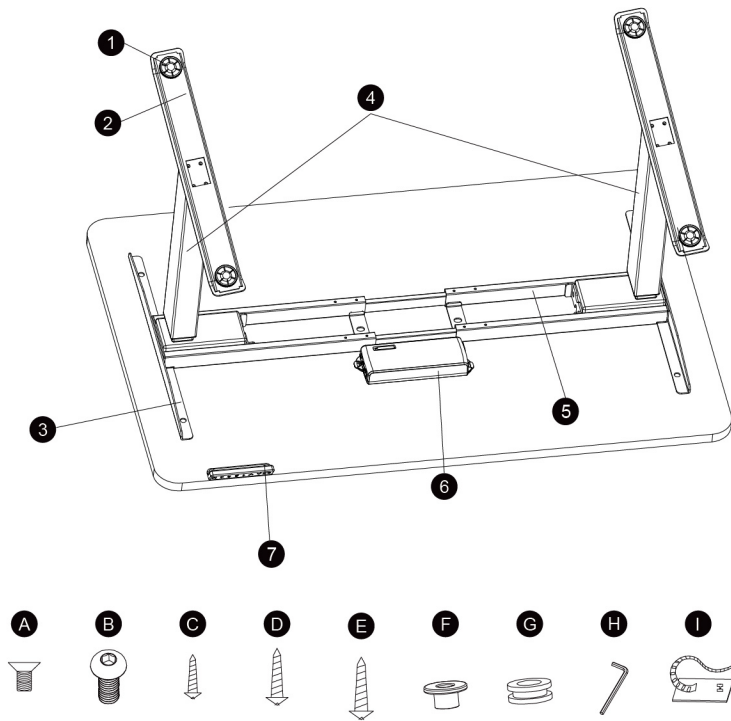
VENACE HOUSEHOLD INC.

www.venace.com www.venacedesk.com



PARTS AND HARDWARE LIST

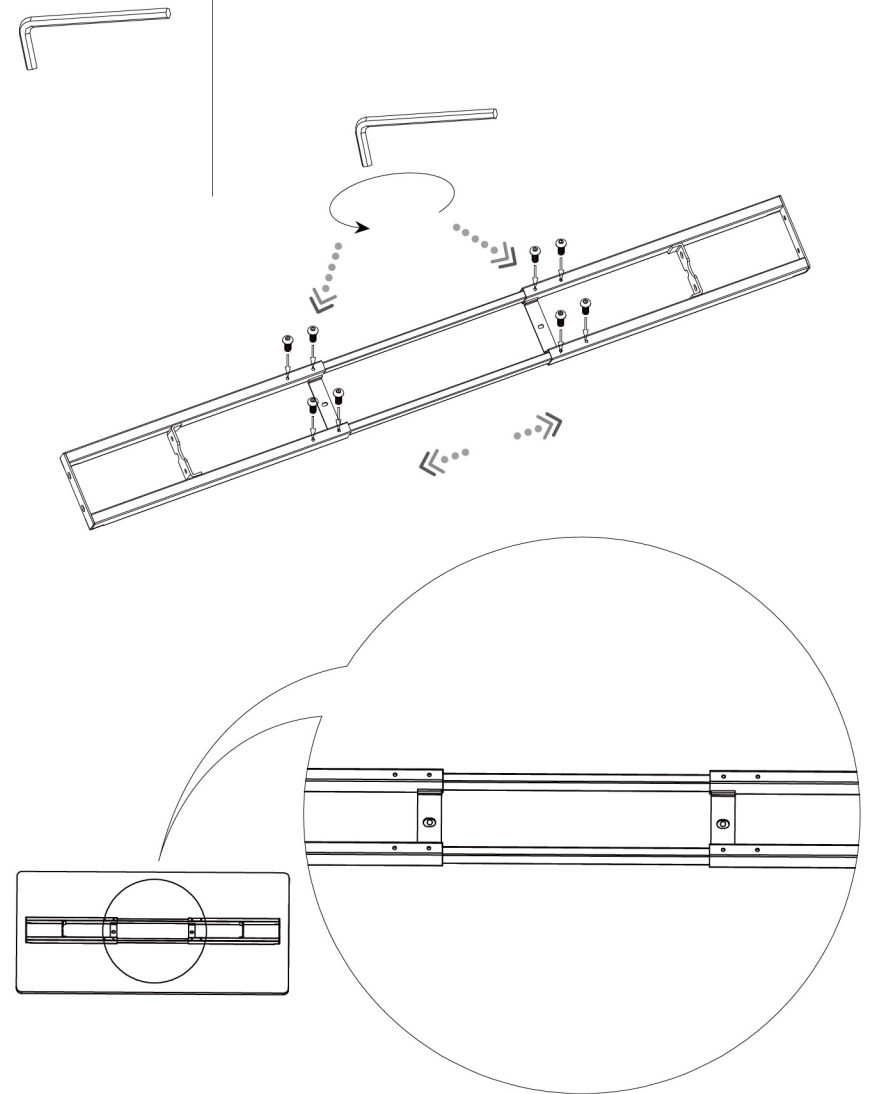
NO	Component Name	Qty	NO	Component Name	Qty
1	Foot Pad	4	A	M6x12 Screw	12
2	Foot Margin	2	B	M6x14 Screw	8
3	Bracket	2	C	ST3.5x19 Screw	2
4	Legs	2	D	ST4.8x19 Screw	2
5	Support Beam	1	E	ST4.8x25 Screw	6
6	Control Box	1	F	Plastic Pad	6
7	Key Pad	1	G	Rubber Cushion	6
			H	4mm Hex Key	1
			I	Cable Tie	5



1

Loosen 8 pcs M6x10 screws, they were attached before packing. Adjust the beam to proper position and then tighten the 8 pcs screws.

4mm Hex Key



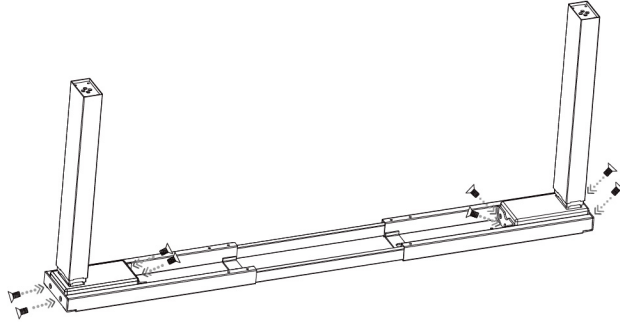
2

Attach the legs to beam and mount them with 8 pcs M6x12 screws.

4mm Hex Key



M6x12 Screw 8 pcs



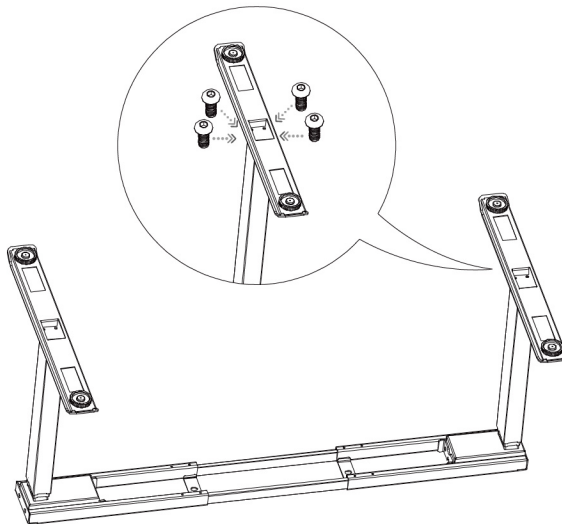
3

Attach the foot margins to each leg, mount them with 8 pcs M6x14 screws and tighten with 4mm hex key.

4mm Hex Key



M6x14 Screws 8 pcs



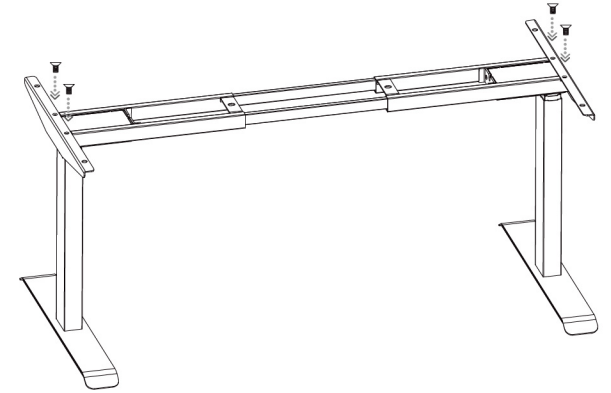
4

Attach brackets to the beam with 4 pcs M6x12 screws.

4mm Hex Key



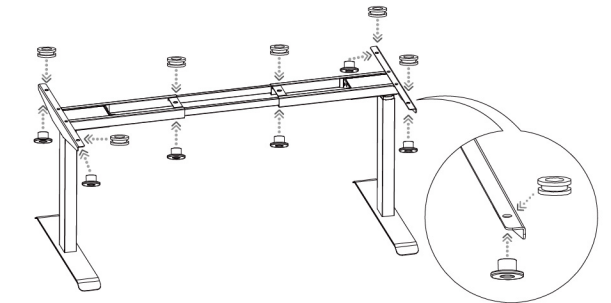
M6x12 Screw 4 pcs



5

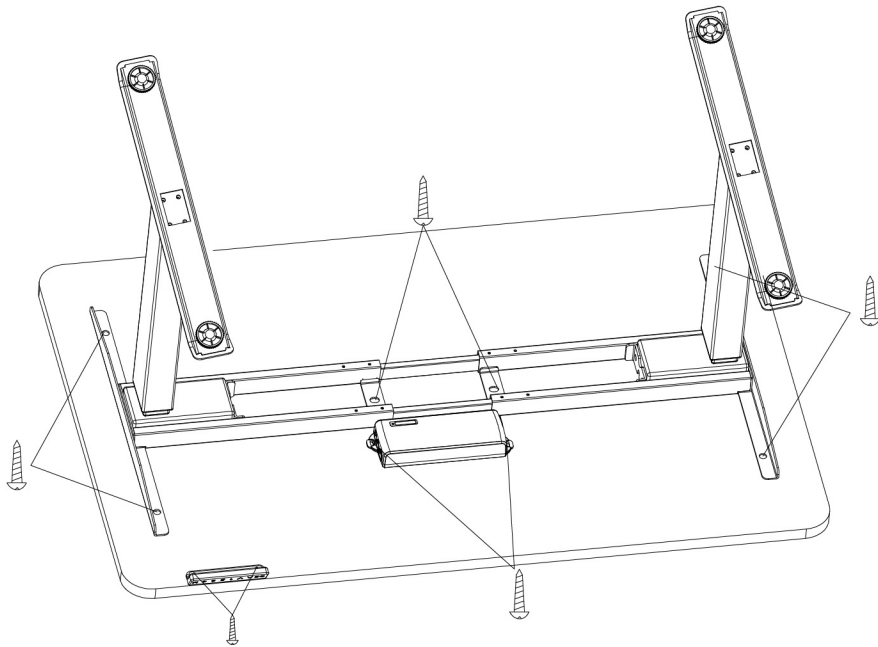
Put rubber cushions and plastic pads on the side brackets and the beam.

Plastic Pad
Rubber Cushion



6

Attach the brackets and the beam to the table top with 6 pcs ST4.8x25 screws. Attach the control box with 2 pcs ST4.8x19 screws. Attach the keypad to the table top with 2 pcs ST3.5x19 screws.



Drill / Driver

ST3.5x19 Screw 2 pcs
 ST4.8x19 Screw 2 pcs
 ST4.8x25 Screw 6 pcs

**7**

Plug cables from two motors and keypad to the control box.

